



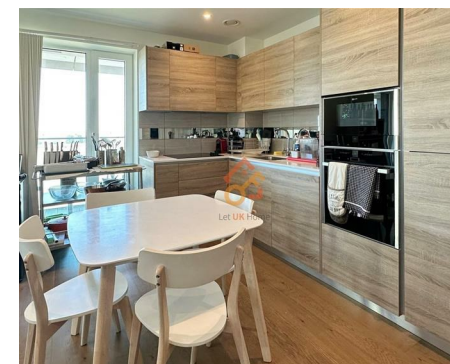
Let **UK** Home

2 Bedrooms

Flat

Located in London

£815,000



info@letukhome.co.uk

<https://www.letukhome.co.uk/>

01795 358 886



Duke of Wellington Avenue London

SE18 6EY



Let UK Home are excited to offer a spacious two-bedroom apartment set in Norton House within the sought-after Royal Arsenal Riverside, Waterfront development.

The flat is of a stylish design, with quality fixtures and fittings throughout, including a bright and well-proportioned reception with wood flooring and access to the balcony with stunning views over the Thames, a fully fitted kitchen integrated with dishwasher, microwave, and fridge/freezer, a master bedroom benefitting from good storage space and an en-suite shower room, a second bedroom being of good size, and a family size bathroom located in the hall. Additionally, this flat comes with a parking space.

Residents benefit from access to concierge services, resident's gym, swimming pool and Cinema.

This is one of South East London's best connected developments, with the on-site Woolwich Elizabeth Line station, journey times into the City, West and Heathrow Airport are faster than ever before. The development also benefits from an on-site Thames Clipper Pier offering easy access into central London. The National Rail and DLR station just a short walk away.

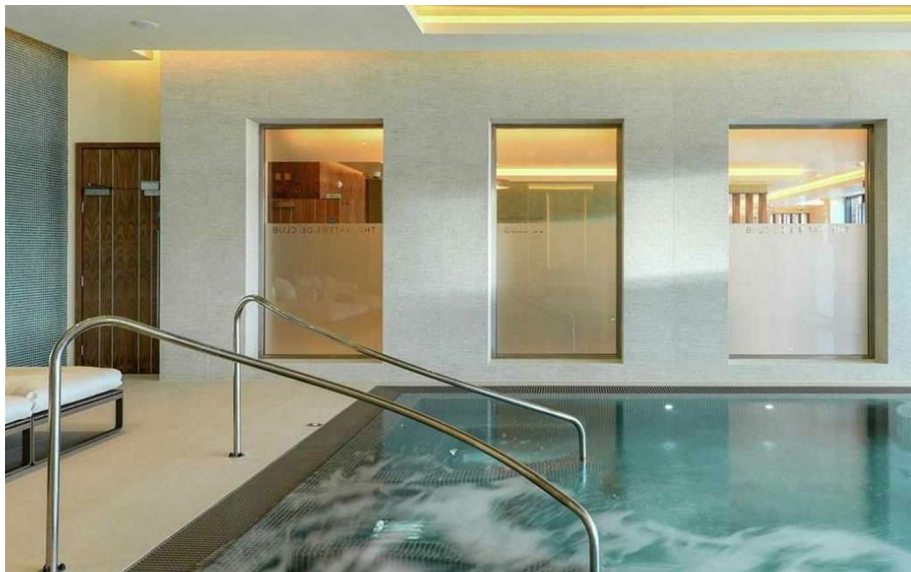
The development is one of South East London's most exciting riverside addresses, occupying a prime location along the River Thames, with all the everyday essential amenities & more on your doorstep. Including Barclays Bank, M&S Food hall, Sainsbury's Local, Pure Gym, gastro-pubs and bars, a dentist and pharmacy, as well as nurseries.

Duke of Wellington Avenue London

£815,000 Leasehold



- 6th Floor
- 24h Security
- Swimming Pool
- Parking Space
- Concierge Service
- The Gym
- Cinema & Game Room



WATERFRONT AT ROYAL ARSENAL RIVERSIDE

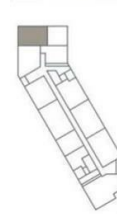
2 BEDROOM APARTMENT

APARTMENT AREA	71.16 sq.m	766 sq.ft
Living/Dining/Kitchen	7240 x 3249 mm. 23' 9" x 10' 8"	
Bedroom 1	3475 x 3350 mm. 11' 5" x 11' 0"	
Bedroom 2	3899 x 2750 mm. 12' 10" x 9' 0"	
Balcony	7947 x 1500 mm. 26' 1" x 4' 11"	

SITE LOCATOR



FLOOR STACKER



LEVELS 4, 6, 8, 10, 12, 14, 16 & 18



Let **UK** Home

3F 2 Eastbourne Terrace
Paddington
London
W2 6LG

01795 358 886

info@letukhome.co.uk

Council Tax Band:

Local Authority:

Agents Note: Whilst every care has been taken to prepare these particulars, they are for guidance purposes only. All measurements are approximate and are for general guidance purposes only and whilst every care has been taken to ensure their accuracy, they should not be relied upon and potential buyers/tenants are advised to recheck the measurements.

Energy Efficiency Rating		Current	Potential
Very energy efficient - lower running costs			
(92 plus) A			
(81-91) B			
(69-80) C			
(55-68) D			
(39-54) E			
(21-38) F			
(1-20) G			
Not energy efficient - higher running costs			
England & Wales	EU Directive 2002/91/EC		

<https://www.letukhome.co.uk/>